

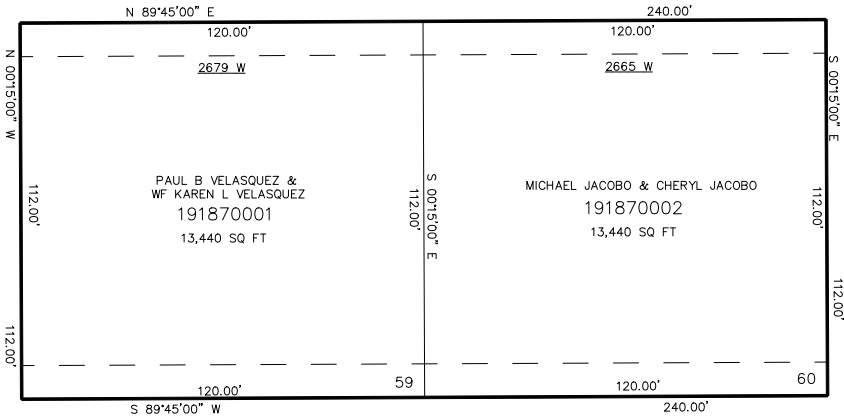
PART OF THE NW.1/4, OF SECTION 23, T.7N., R.2W., S.L.B. & M.
AMENDMENT TO REMUDA SUBDIVISION & GOLF COURSE—PHASE 1

TAXING UNIT: 145

IN FARR WEST CITY
SCALE 1" = 30'

SEE PAGE 136

3850 NORTH STREET



SEE PAGE 136

SEE PAGE 136

SEE PAGE 11

10' UTILITY & DRAINAGE EASEMENTS EACH
SIDE OF PROPERTY LINES AS INDICATED
BY DASHED LINES EXCEPT AS OTHERWISE
SHOWN.

FOR COMPLETE ENG DATA SEE
ORIGINAL DEDICATION PLAT IN
BOOK 58, PAGE 17 OF RECORDS.